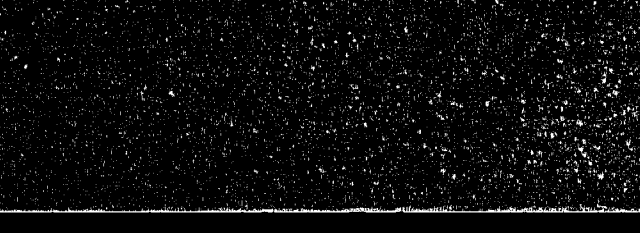
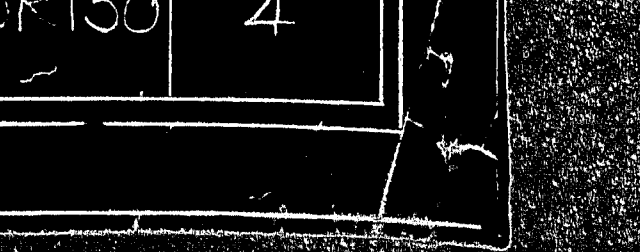
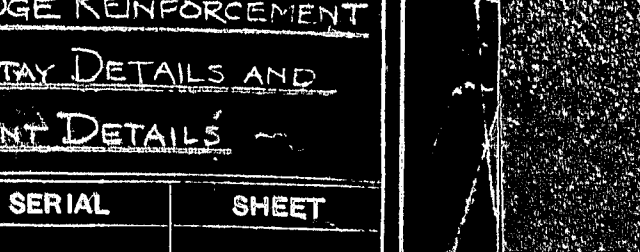
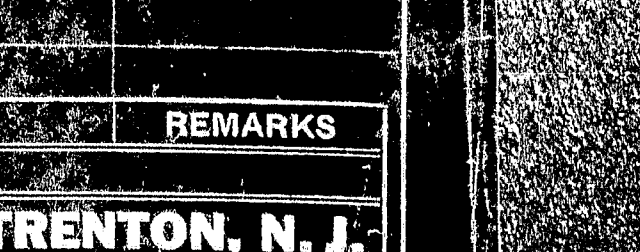
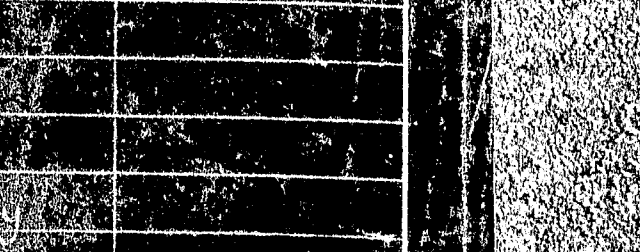
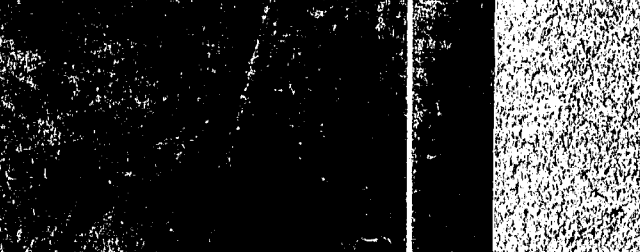
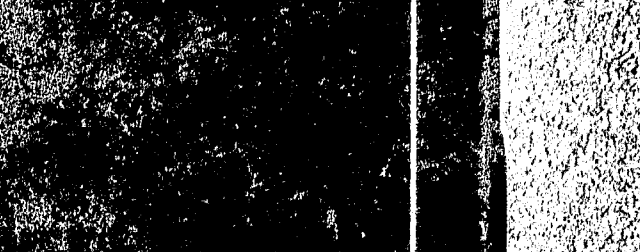
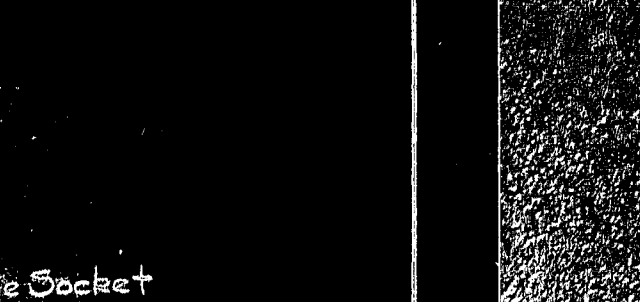
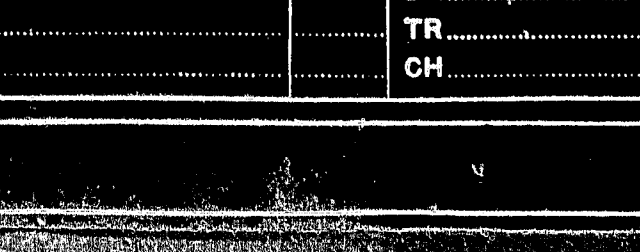
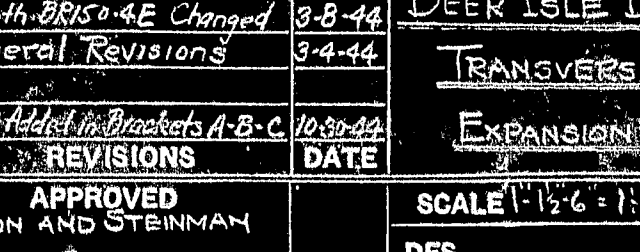
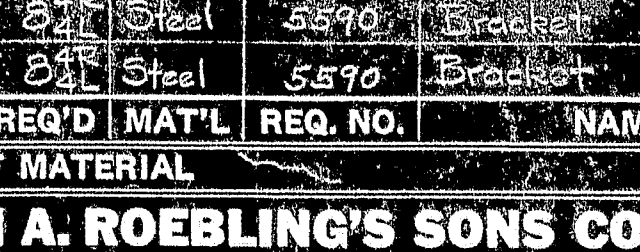
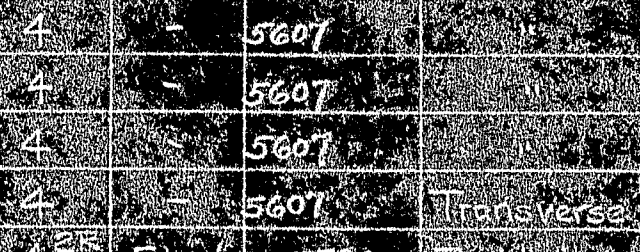
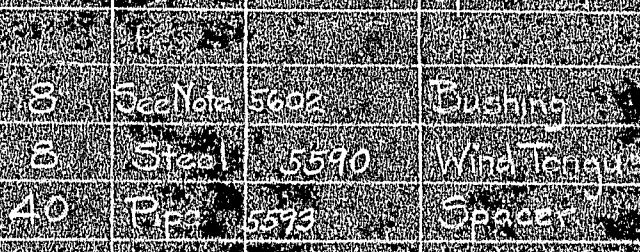
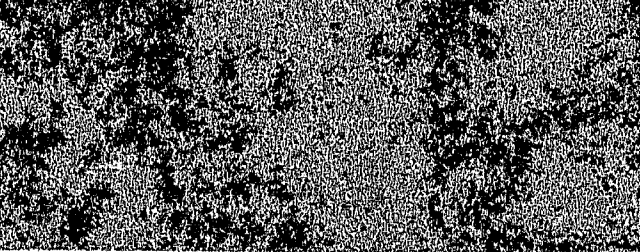
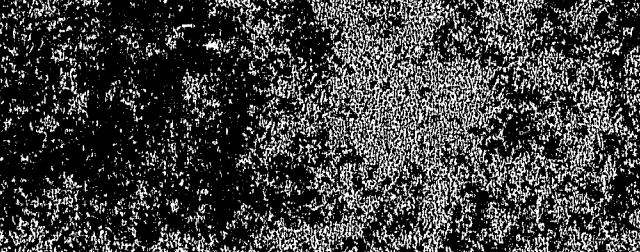
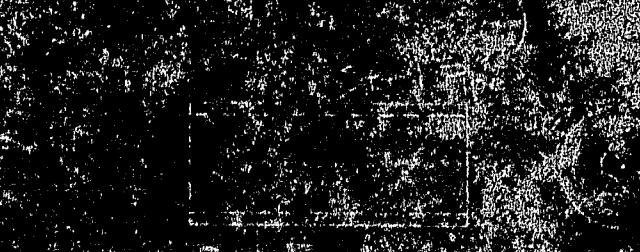
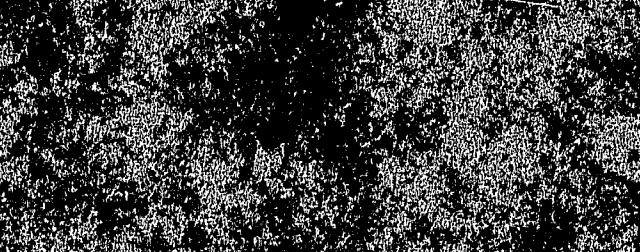
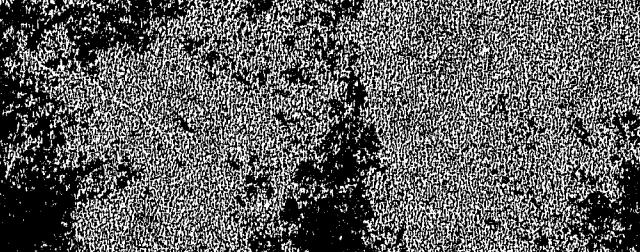
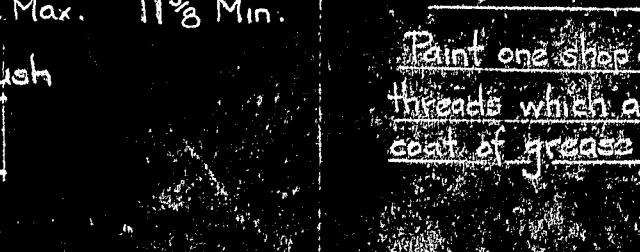
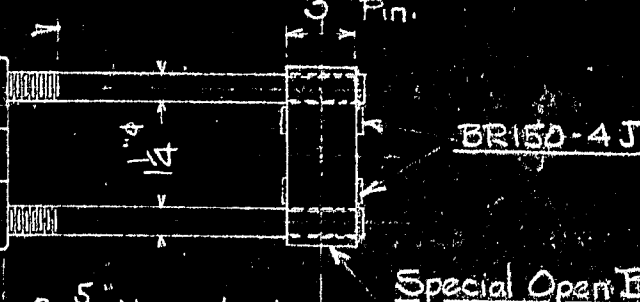
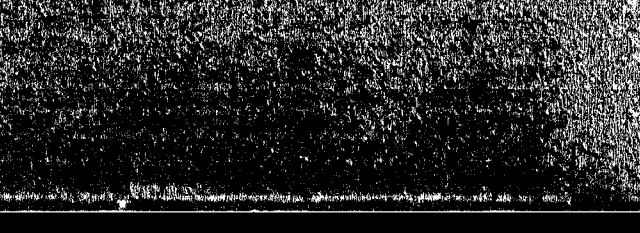
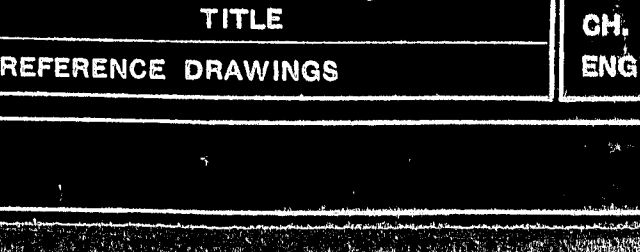
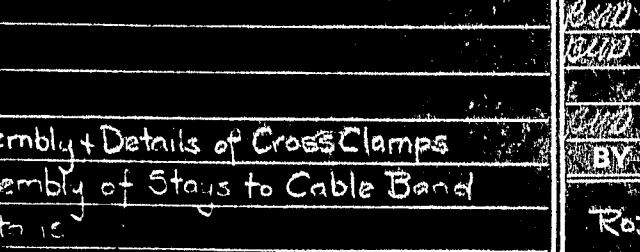
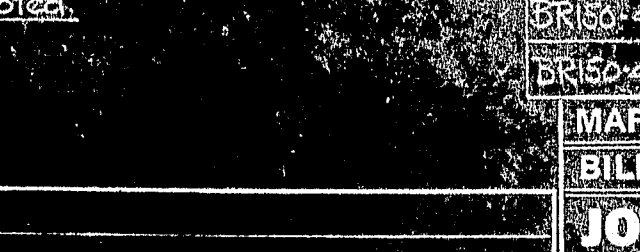
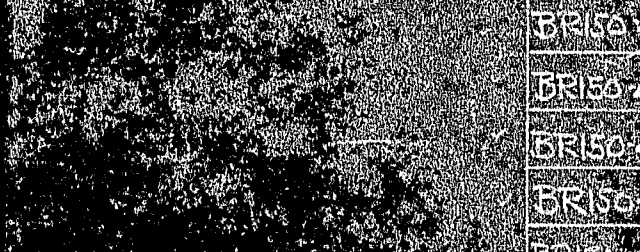
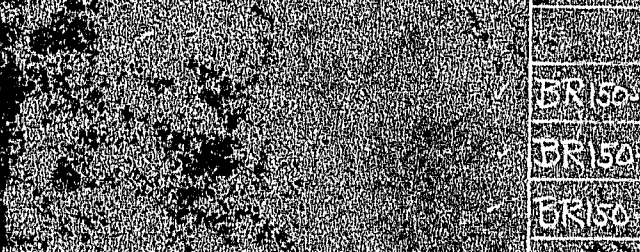
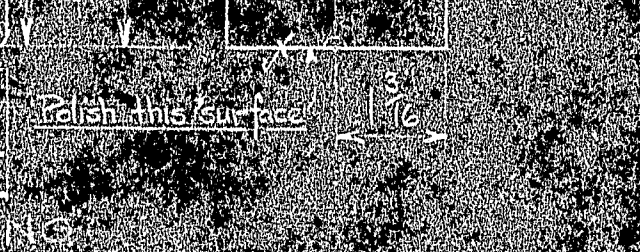
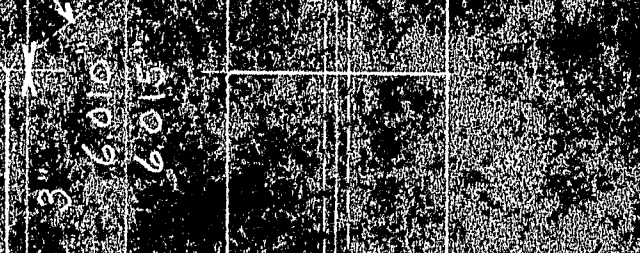
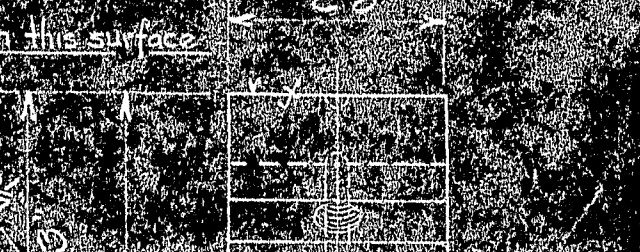
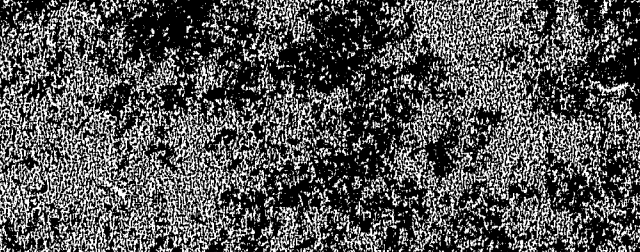
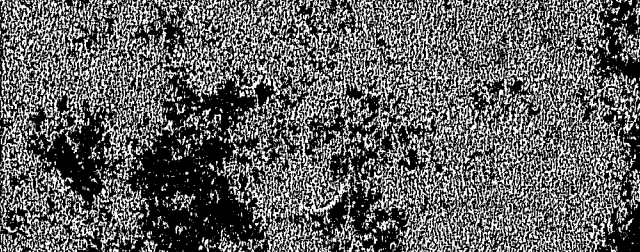
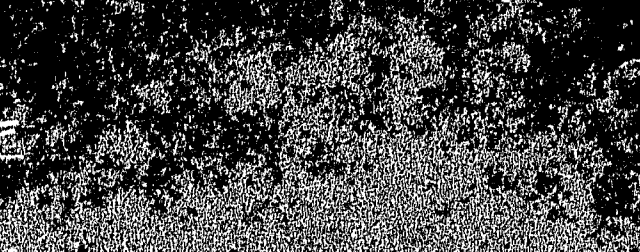
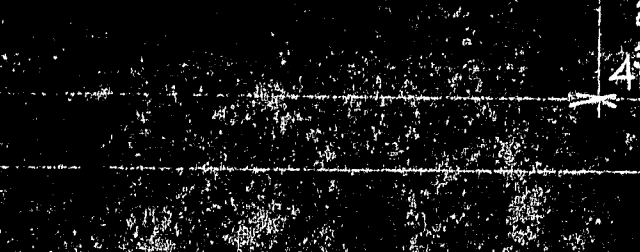
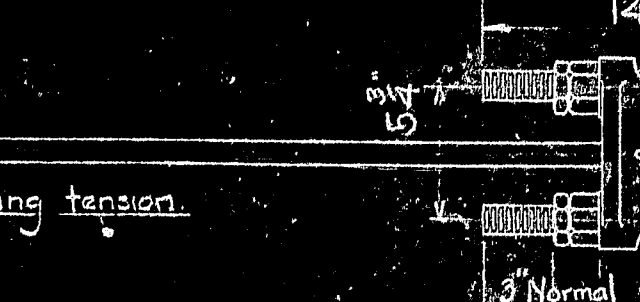
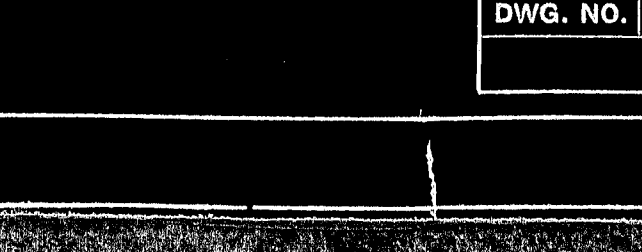
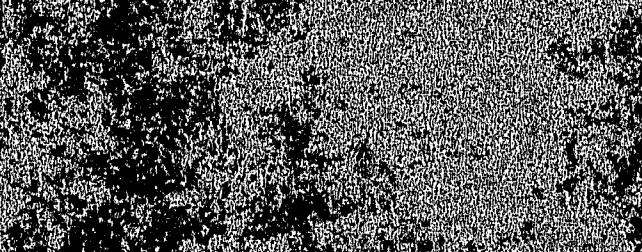
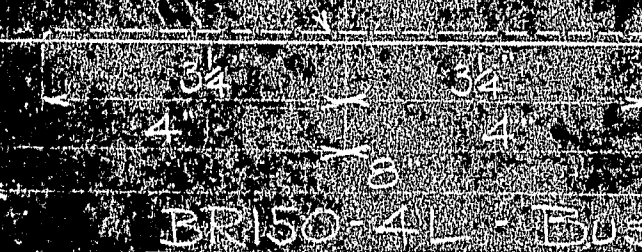
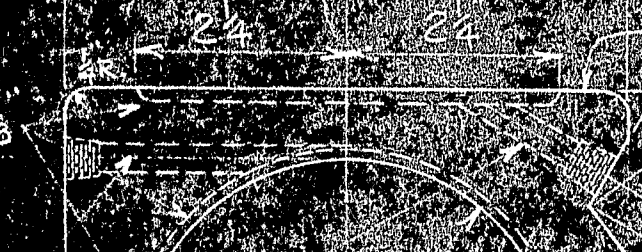
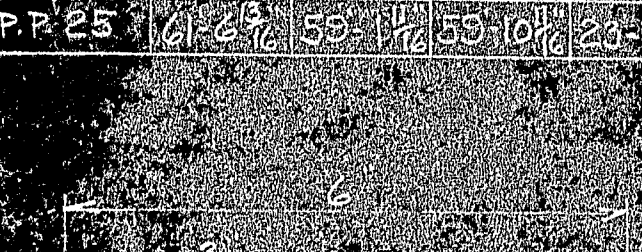
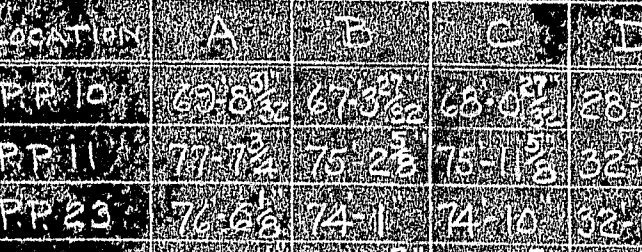
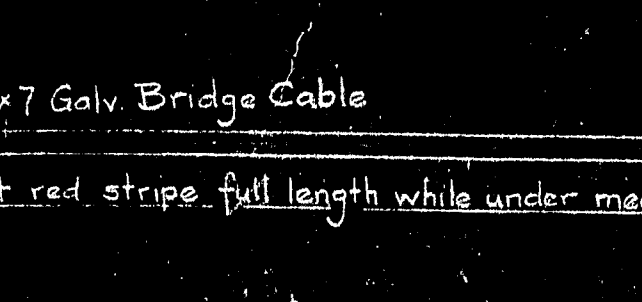
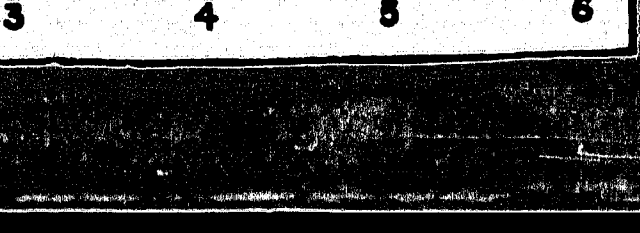
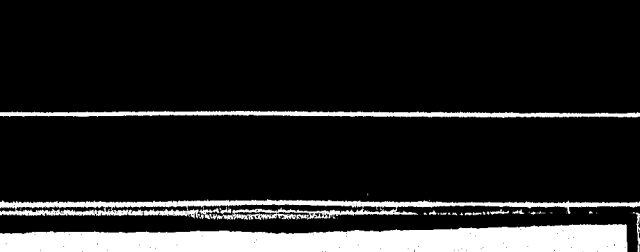
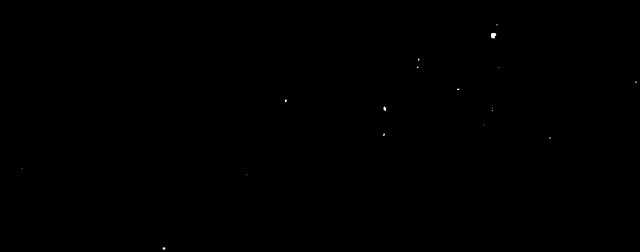
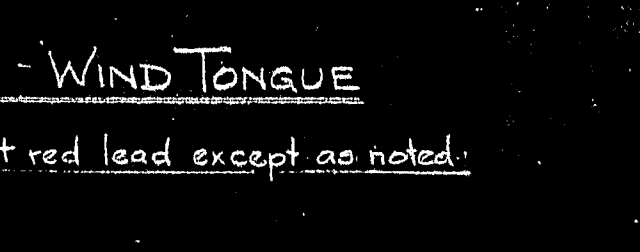
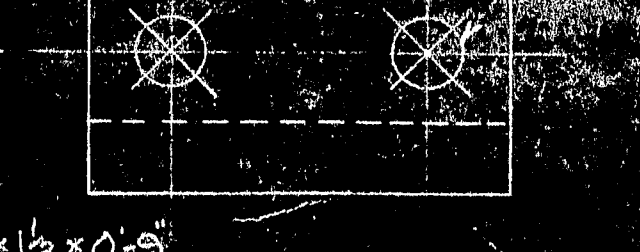
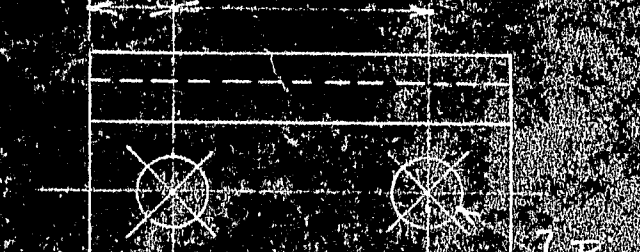
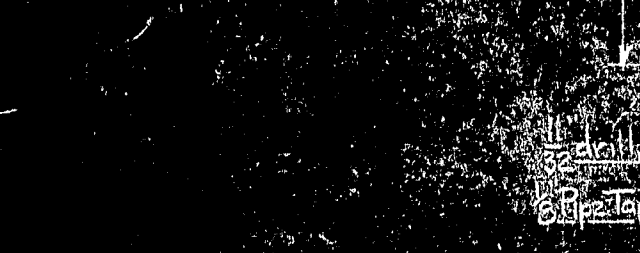
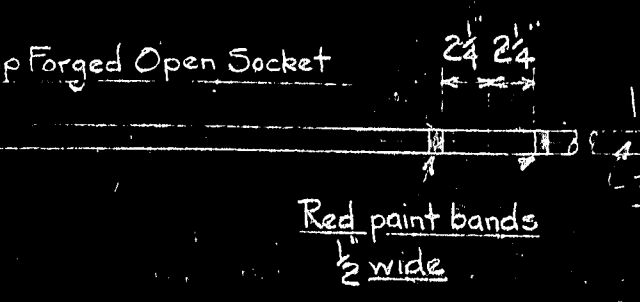
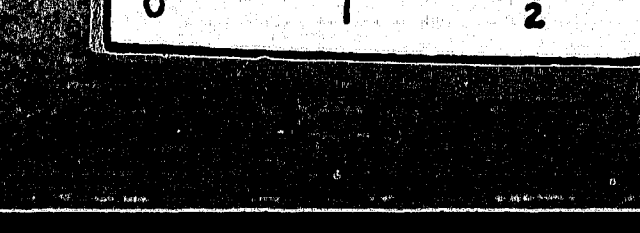
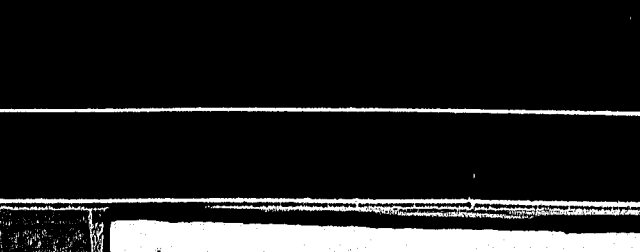
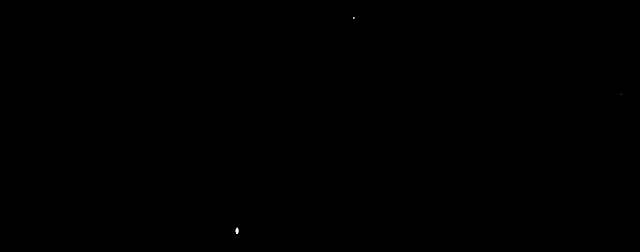
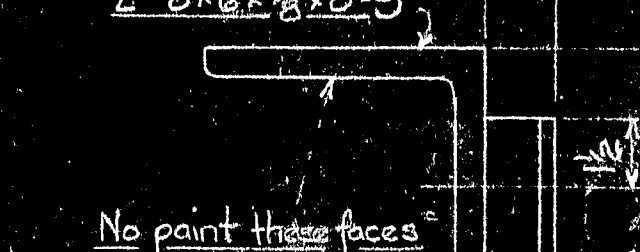
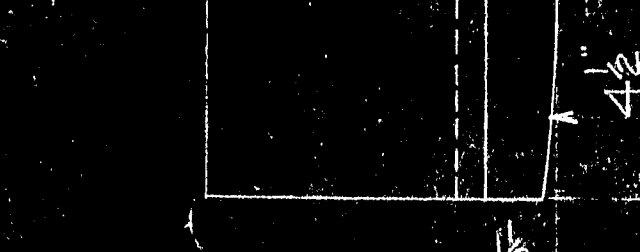
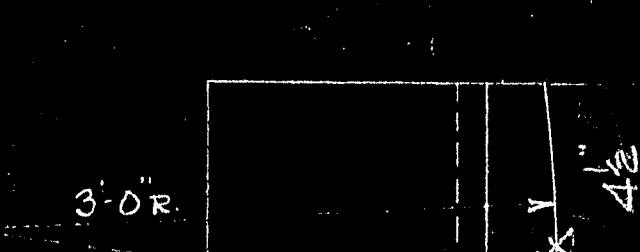
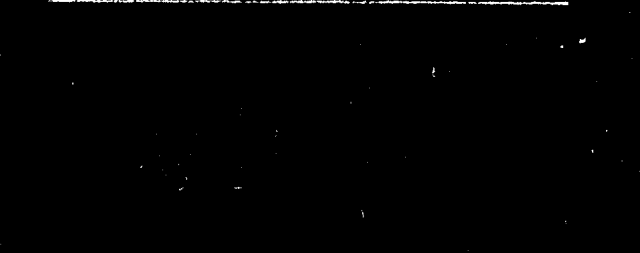
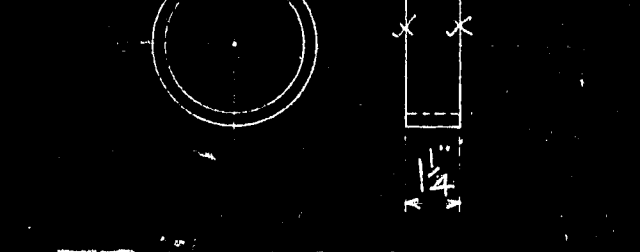
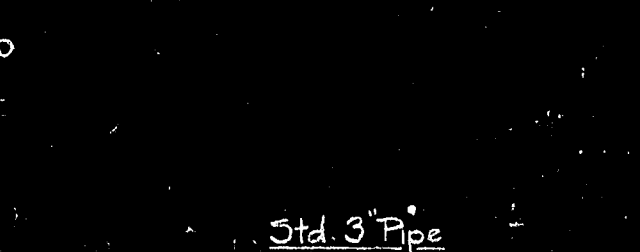
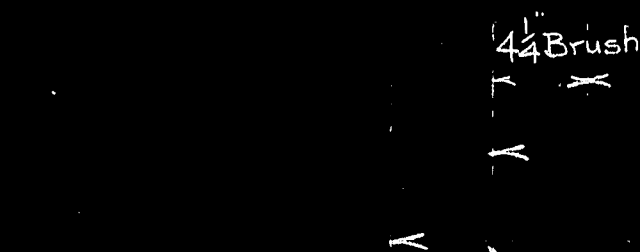
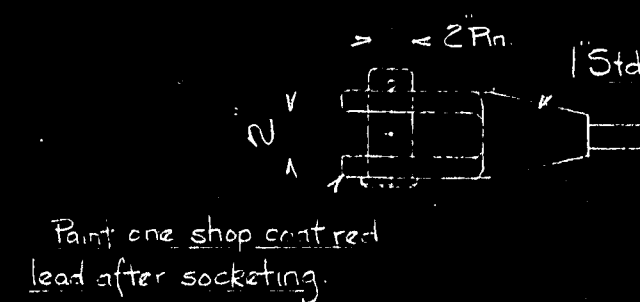


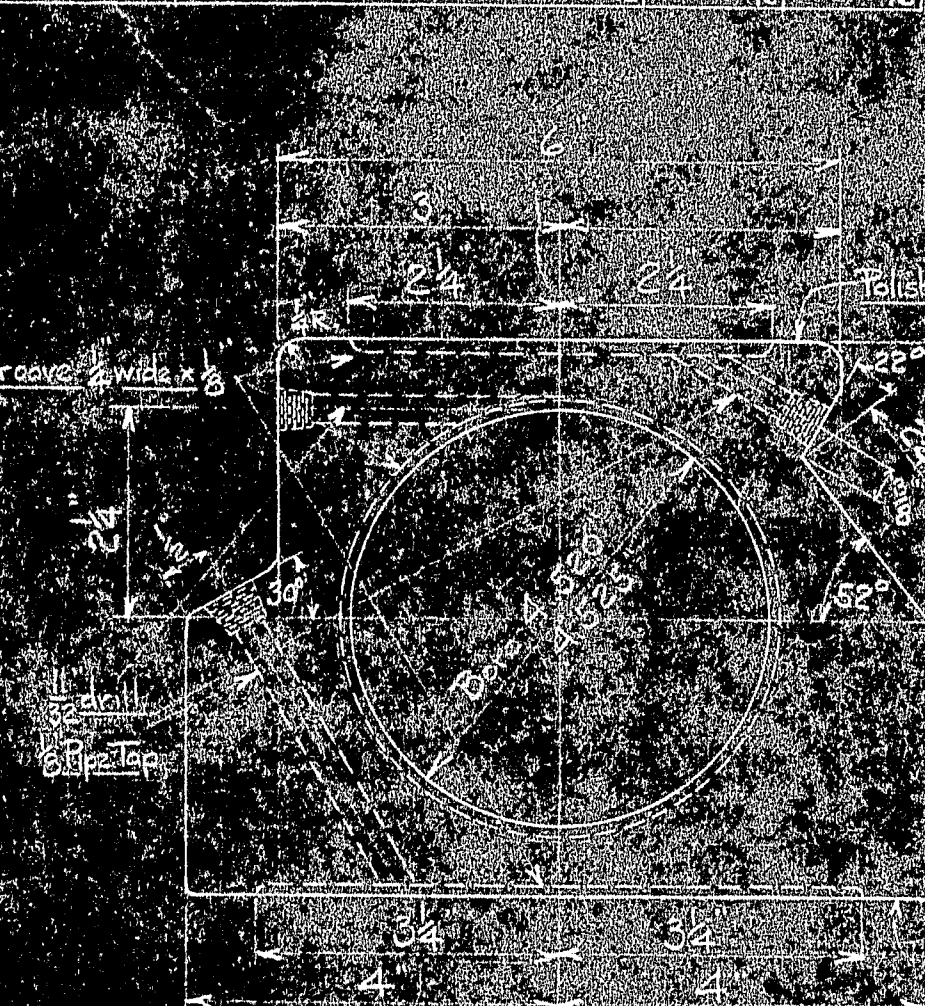
BR150-4A^R BRACKET AT P.P. 11 AND 23
BR150-4B^R BRACKET AT P.P. 10 AND 24
BR150-4C^R BRACKET AT P.P. 25
Paint one shop coat red lead except as noted



TRANSVERSE STAYS

Prestress at 42,000# Measuring Tension 5000# @ 50°F

MARK	LOCATION	A	B	C	D
BR150-4D	P.P. 10	62-3 1/2	67-3 1/2	68-0 1/2	28-3 1/2
BR150-4E	P.P. 11	71-1 1/2	75-2 1/2	75-11 1/2	32-7 3/8
BR150-4F	P.P. 23	72-2 1/2	74-1	74-10	32-1 1/2
BR150-4G	P.P. 24	68-6 1/2	68-1 1/2	68-10 1/2	27-9 1/2
BR150-4H	P.P. 25	61-2 1/2	55-1 1/2	55-10 1/2	23-10 1/2



BR150-4L BUSHING

Threaded Plug - A 511M Designation B100 Type A or equal

Polish this surface

Polish this surface

Polish this surface

Polish this surface

Polish this surface

Polish this surface

Polish this surface

Polish this surface

Polish this surface

Polish this surface

Polish this surface

Polish this surface

Polish this surface

Polish this surface

Polish this surface

Polish this surface

Polish this surface

Polish this surface

Polish this surface

Polish this surface

MARK	REQ'D	MAT'L	REQ. NO.	NAME	REMARKS
BR150-4	20		5578-97	Special Open Bridge Socket for Cable (All)	
BR150-4L	8	Galv. Steel	5570	Bushing	
BR150-4K	8	Steel	5570	Wind Tongue	
BR150-4J	40	Pl.	5573	Spacer	
BR150-4H	4		5607	Transverse Stay	
BR150-4G	4		5607		
BR150-4F	4		5607		
BR150-4E	4		5607		
BR150-4D	4		5607		
BR150-4C	4		5607		
BR150-4B	4		5607		
BR150-4A	4		5607		
BR150-4I	4	Steel	5570	Bracket	
BR150-4J	4	Steel	5570	Bracket	
BR150-4K	4	Steel	5570	Bracket	
BR150-4L	4	Steel	5570	Bracket	

BILL OF MATERIAL

JOHN A. ROEBLING'S SONS CO., TRENTON, N. J.

DEER ISLE BRIDGE REINFORCEMENT

TRANSVERSE STAY DETAILS AND

EXPANSION JOINT DETAILS

APPROVED

REVISIONS

DATE

SCALE 1/4" = 1'-0"

SHEET

BR150 4

